



**WORLDWIDE ELECTRIC MOTOR DATA SHEET**

**PEWWE5-18-184TC**



HORSEPOWER	<b>5</b>		
RPM / POLES	<b>1800 / 4</b>		
VOLTAGE / PHASE	<b>230 / 460 V / 3</b>		
FRAME	<b>184TC</b>		
ENCLOSURE / DEGREE OF PROTECTION	<b>TEFC / IP55</b>		
FREQUENCY	<b>60 HZ Suitable For 50 HZ Operation With 1.0 SF</b>		
FULL LOAD SPEED	<b>1755 RPM</b>		
SERVICE FACTOR	<b>1.25</b>		
INSULATION CLASS	<b>F</b>		
FULL LOAD AMPS; 230 / 460	<b>12.6 / 6.3 A (Usable On 208V At 13.9 A)</b>		
LOCKED ROTOR AMPS (STARTING); 230 / 460	<b>92 / 46 A</b>		
NO LOAD CURRENT	<b>5.7 / 2.85 A</b>		
NEMA CODE LETTER	<b>J</b>		
EFFICIENCY / POWER FACTOR	<u>LOAD</u>	<u>EFF.</u>	<u>P.F.</u>
	<b>100 %</b>	<b>89.5%</b>	<b>0.83</b>
	<b>75 %</b>	<b>90.0%</b>	<b>0.77</b>
	<b>50 %</b>	<b>89.2%</b>	<b>0.66</b>
DUTY CYCLE	<b>S1 / Continuous</b>		
TORQUE	<u>FULL LOAD</u>	<u>LRT</u>	<u>BDT</u>
	<b>15.0 lb.ft.</b>	<b>200%</b>	<b>280%</b>
SLIP	<b>2.5 %</b>		
NEMA DESIGN	<b>B</b>		
MOMENT OF INERTIA	<b>0.313 lb.ft.<sup>2</sup></b>		
MAX. TIME LOCKED ROTOR (Hot)	<b>16 Seconds</b>		
SOUND PRESSURE LEVEL	<b>63 dB (A)</b>		
MAX. AMBIENT TEMPERATURE	<b>40° C</b>		
MAX. ELEVATION	<b>3300 Ft.</b>		
TEMPERATURE RISE (At Full Load)	<b>80° C</b>		
DE BEARING	<b>6206ZZ C3</b>		
ODE BEARING	<b>6206ZZ C3</b>		
REGREASING INT. - DE BEARING	---		
REGREASING INT. - ODE BEARING	---		
GREASE TYPE	<b>SKF LGHP 2</b>		
MOUNTING	<b>F1</b>		
ROTATION	<b>Bi-Directional</b>		
SHAFT MATERIAL	<b>1045 Carbon Steel</b>		
INVERTER RATING	<b>10:1 CT / 20:1 VT PWM Type</b>		
CONNECTION DIAGRAM	<b>230 / 460 V - 9 Lead Y</b>		
AREA CLASSIFICATION	<b>Class I, Division 2, Groups A, B, C, D</b>		
APPROXIMATE WEIGHT	<b>104 lbs.</b>		



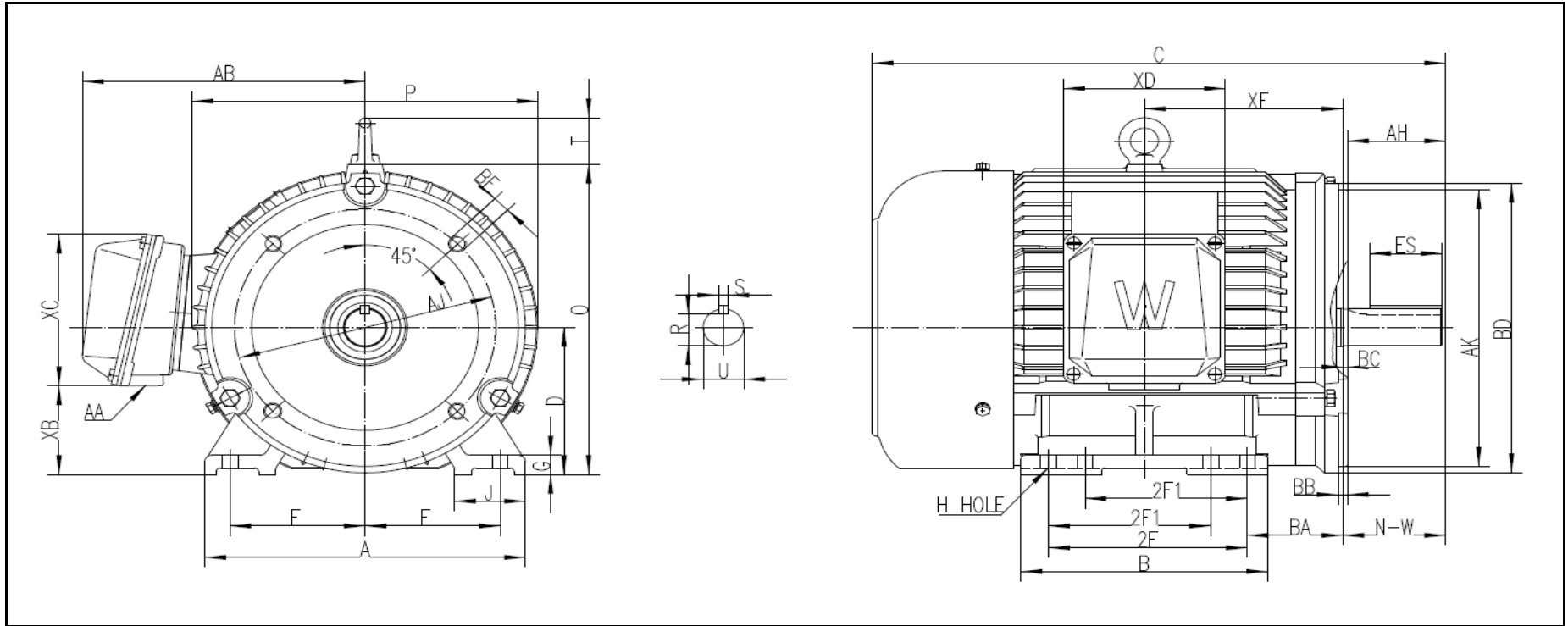
**CC006A**





# WORLDWIDE ELECTRIC MOTOR DRAWING

## PEWWE-184TC



**DIMENSIONS - INCHES**

MOUNTING					A	B	C	D	G	J	P	O	T	AB
E	2F1	2F2	H	BA										
3.75	4.5	5.5	0.41	2.75	9	7	16	4.5	0.6	2	9.7	9.5	1.42	8

KEY		KEYSET	FLANGE				SHAFT		TERMINAL BOX					
S	ES	R	AK	AJ	BF	BB	BD	N-W	U	AA	XB	XC	XD	XE
0.25	1.78	0.986	8.5	7.25	1/2 - 13	0.25	9	2.75	1.125	1	2.2	5.1	4.6	5.5

REVISED - 03/30/18

# PERFORMANCE CURVES

WorldWide Electric Corporation

1 (800) 808-2131

Worldwideelectric.net

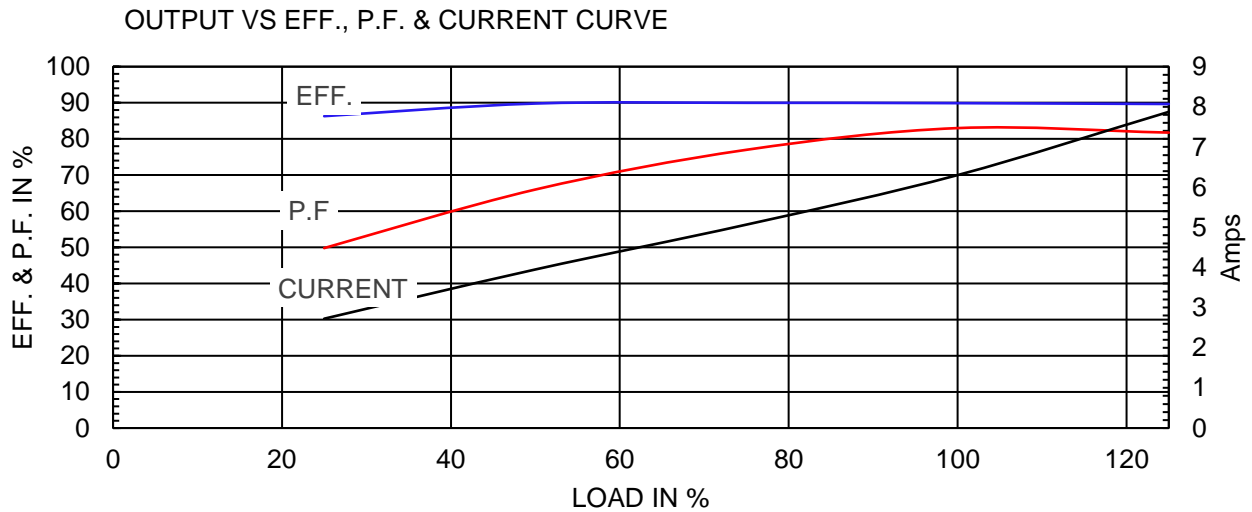
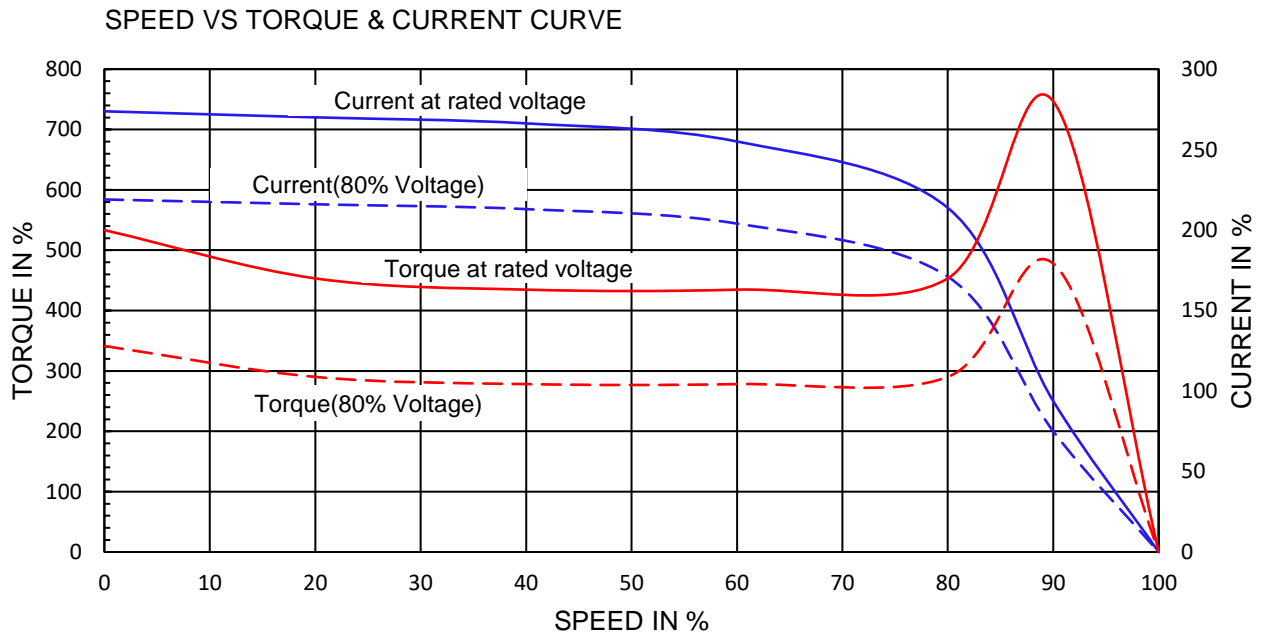


Premium Efficiency Motor:

**PEWWE5-18-184TC**

Document Generated:	25-Jun-2020	Customer:	
Document ID:			

Motor Type	PEWWE		
Output Rating (HP)	5	FL Speed	1755
Full Load Torque	15 lb.ft	LRT (%FLT)	200
Rotor Wk <sup>2</sup>	0.326 lb-ft <sup>2</sup>	BDT (%FLT)	280
		460 volt FLA	6.3
		230 volt FLA	12.6A



# NAMEPLATE / WIRING

WorldWide Electric Corporation

1 (800) 808-2131

Worldwideelectric.net



Premium Efficiency Motor: **PEWWE5-18-184TC**

Document Generated: 24-Sep-2019  
Document ID:

Customer:

## SAMPLE NAMEPLATE DATA

		<b>PREMIUM EFFICIENCY</b> <b>3-PHASE INDUCTION MOTOR</b>		CC006A ISO9001	259277 
Model	PEWWE5-18-184TC	Ser No.	ZP		
HP	5	S.F.	1.25	Type	Encl
Frame	184TC	P.F.	0.83	Ins Cl	TEFC IP55
Voltage	230/460	Hz	60 Hz	Design	Rating
Amps	12.6A / 6.3A	RPM	1755	Code	40°C Amb Cont
Nom.Eff.	FL 89.9 %	3/4	90.0 %	230/460V	Date
Usable on 208V network at 14 Amps 1.0SF 10:1 CT 20:1 VT PWM VFD 1.0SF		Class I DIV. 2 Groups A B C D Class I Zone 2 IIC		Amb.40°C	T3C(160°C)
50Hz 5 HP 200/400 V V 15. / 7.4 A 1450 rpm S.F1.0				Amb.55°C	T3A(180°C)
<div style="display: flex; justify-content: space-between;"> <div style="border: 1px solid black; padding: 5px;"> <b>Low Voltage</b>                  4—5—6                  7 8 9                  1 2 3                  L1 L2 L3             </div> <div style="border: 1px solid black; padding: 5px;"> <b>High Voltage</b>                  4 5 6                  7 8 9                  1 2 3                  L1 L2 L3             </div> </div>					
<b>WorldWide Electric Corporation</b>					

